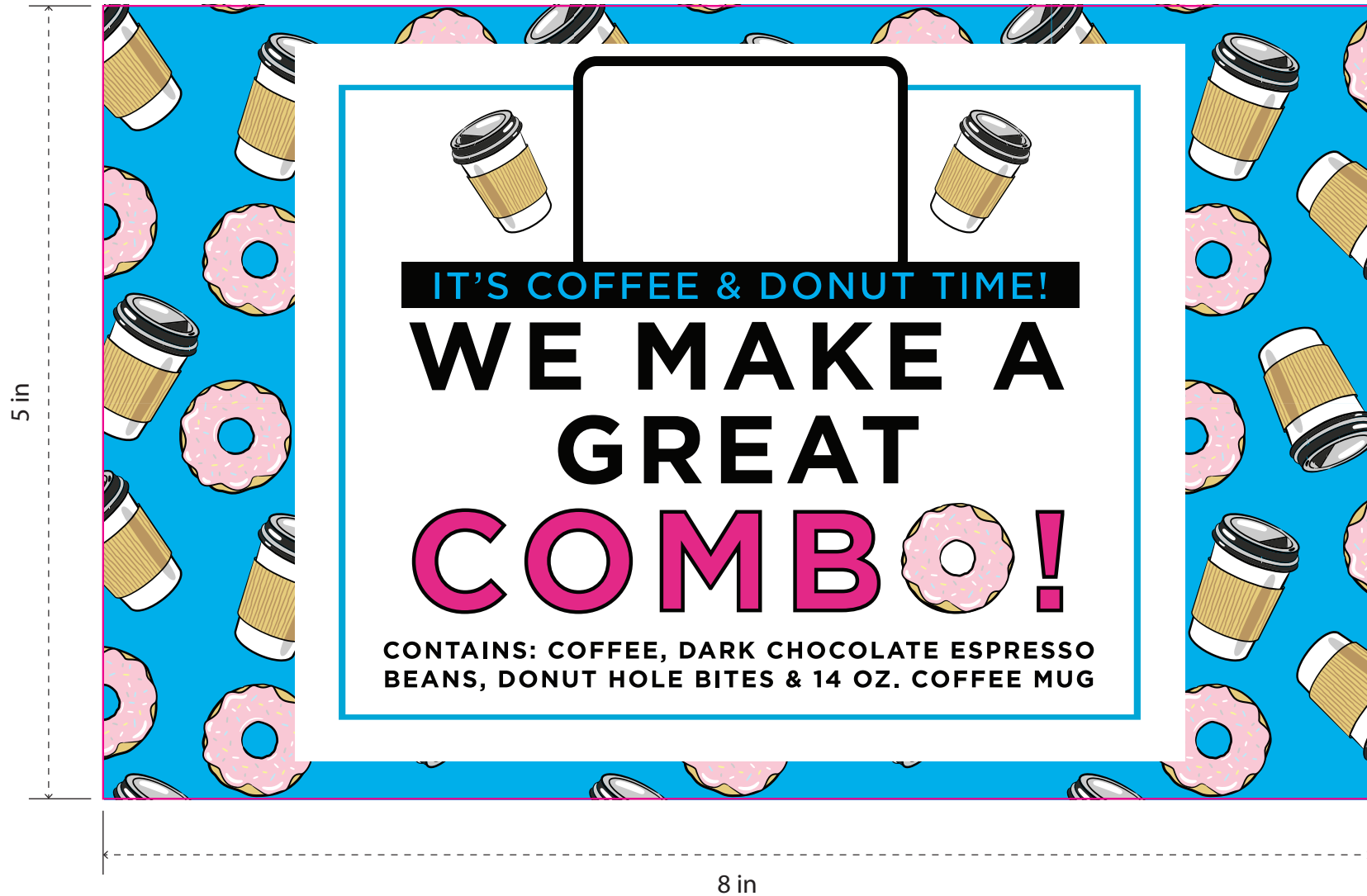


Inner Label



Imprint Area: 8" W x 5" H
Imprint Method: Full Color Label

Lid Imprint



Imprint Area: 9" W x 6" H

Imprint Method: Silkscreen (1 Color)

Outter Label



Imprint Area: 2"D

Imprint Method: Full Color Label

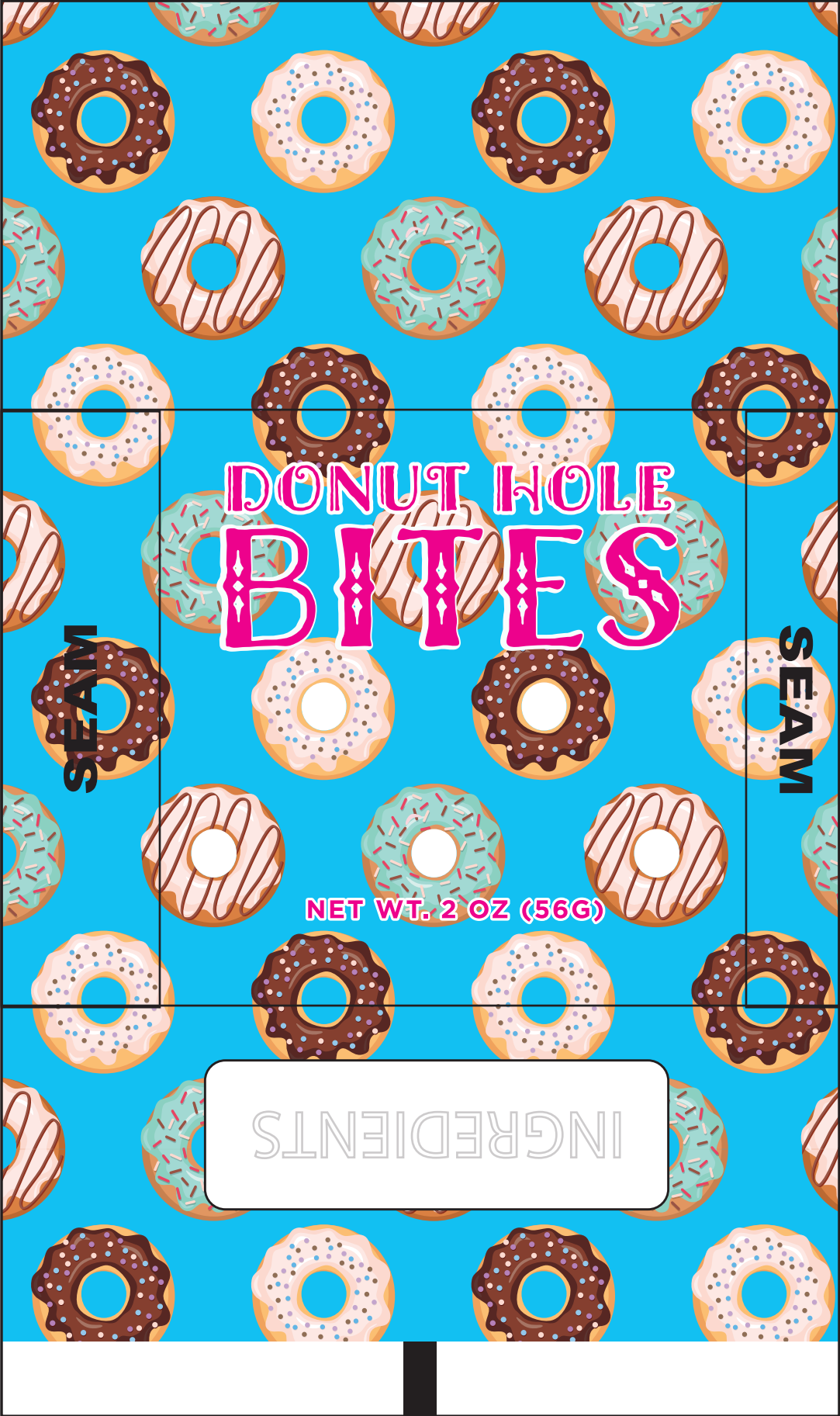
Surepress

Job:

Bag Size: 5.625" x 4"

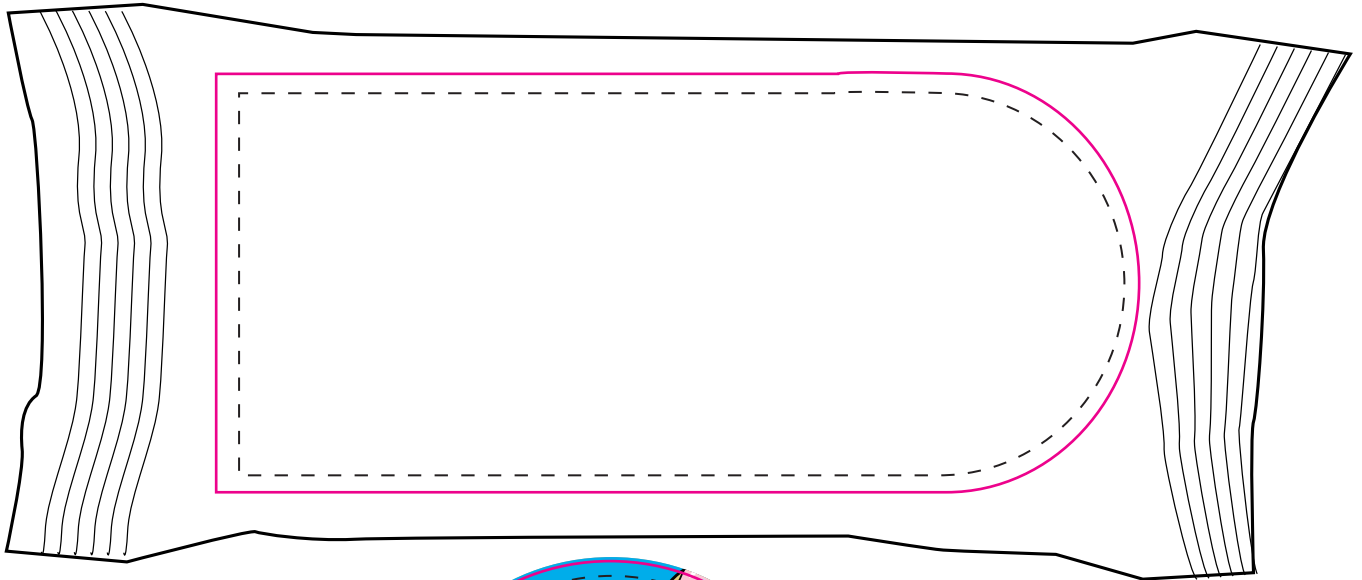
Bag: 9.5 - [CLEAR]

Imprint:



CF100

Coffee Packs



BLEED LINE

CUT LINE



Item# CF100

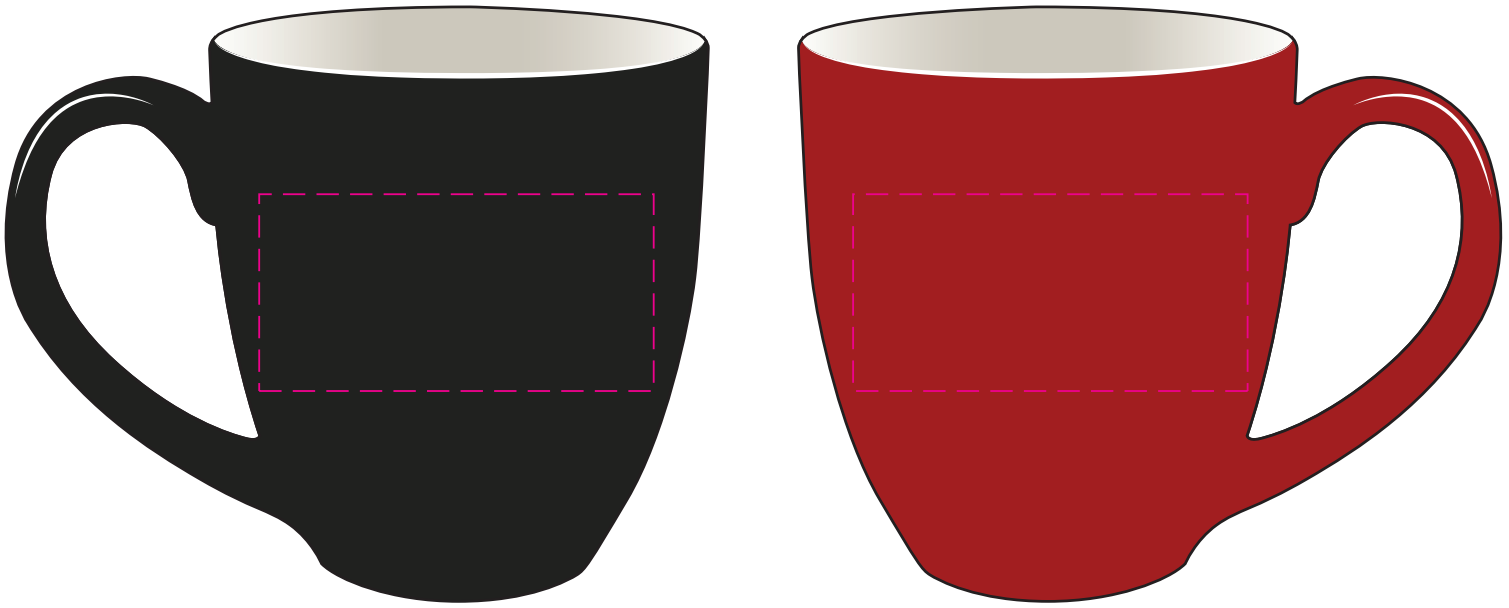
Item Size: 3" W x 7" H

Max Imprint Area: 2" W x 5" H (Indicated by Dotted Line - Does Not Print)

Imprint Method: 4CP LABEL

DRK870

14 oz. Duo Tone Coffee Mug



Artwork at 100%

FULL WRAP IMPRINT AREA

(INDICATED BY BLUE DASHED LINE)



Imprint will be Centered Opposite of the Handle.
We Cannot Center 2 logos on each side of the mug
when doing a wrap Imprint

Artwork at 100%

Item#DRK870

Item Size: 4 1/2" W x 4 7/8" H

Single Side Imprint Area: 3" W x 1 1/2" H (Indicated by Dotted Line - Does Not Print)

Full Wrap: 7" W x 1 1/2" H

Imprint Method: SILKSCREEN

Surepress

Job:
Bag Size: 5.625" x 4"
Bag: 9.5 - [CLEAR]

Imprint:

MAGENTA WILL PRINT CLEAR

