

SBF 2600 MINTELOPE

Artwork @ 100

(FULL BLEED TEMPLATE)

Item Size: 4 1/16"w x 2.5"h

Max Imprint Area: **Front:** 3 3/4"w x 2 1/8"h

Back: 3 51/64 x 1 7/64

Front/Back Side: 3 51/64 x 11/64

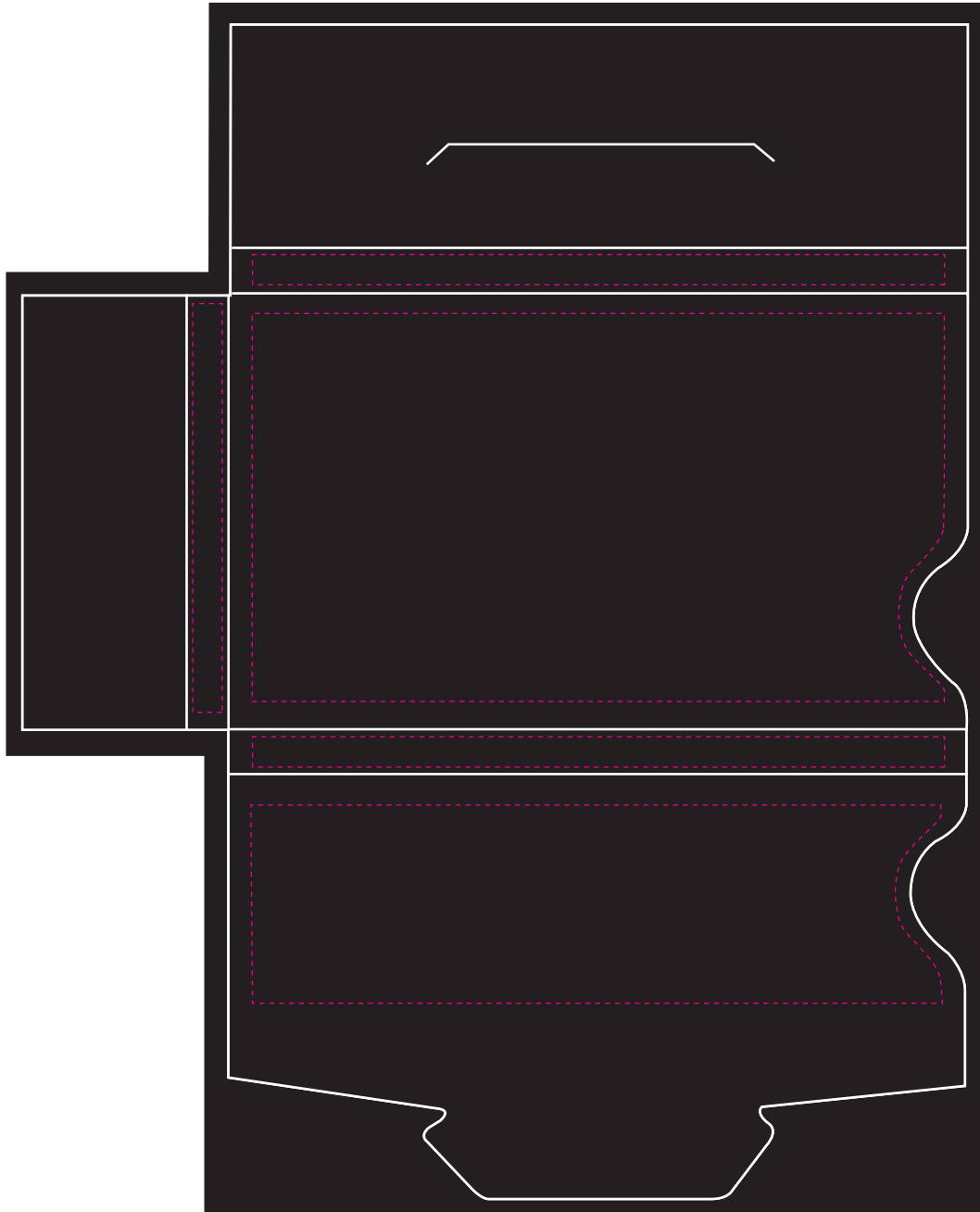
Right Side: 5/32 x 11/64

(Indicated By Dotted Line, Does Not Print)

Imprint Color(s):

Imprint Method: Flexo

Die # (If Applies): Die #56,



PLATING

☐

DATE

NAME

PRINTING

☐

DATE

NAME